



iBelieve

Présent et Futur de l'IBM i 2021

Evènement
on-line
18 Nov 21

**Vous rêvez de développer
rapidement des applications
Web et mobile sur IBM i ?**



Développement rapide d'application sur
IBM i Web & Mobile

Organisé par  **itheis**
avec la participation d' 

Avec :   







Bienvenue dans cette session

Thierry
LABRUNIE



Directeur Technique

Thierry.labrunie@itheis.com

Stephane
GAGLIARDI



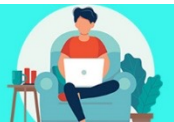
Architecte logiciel

Stephane.gagliardi@itheis.com



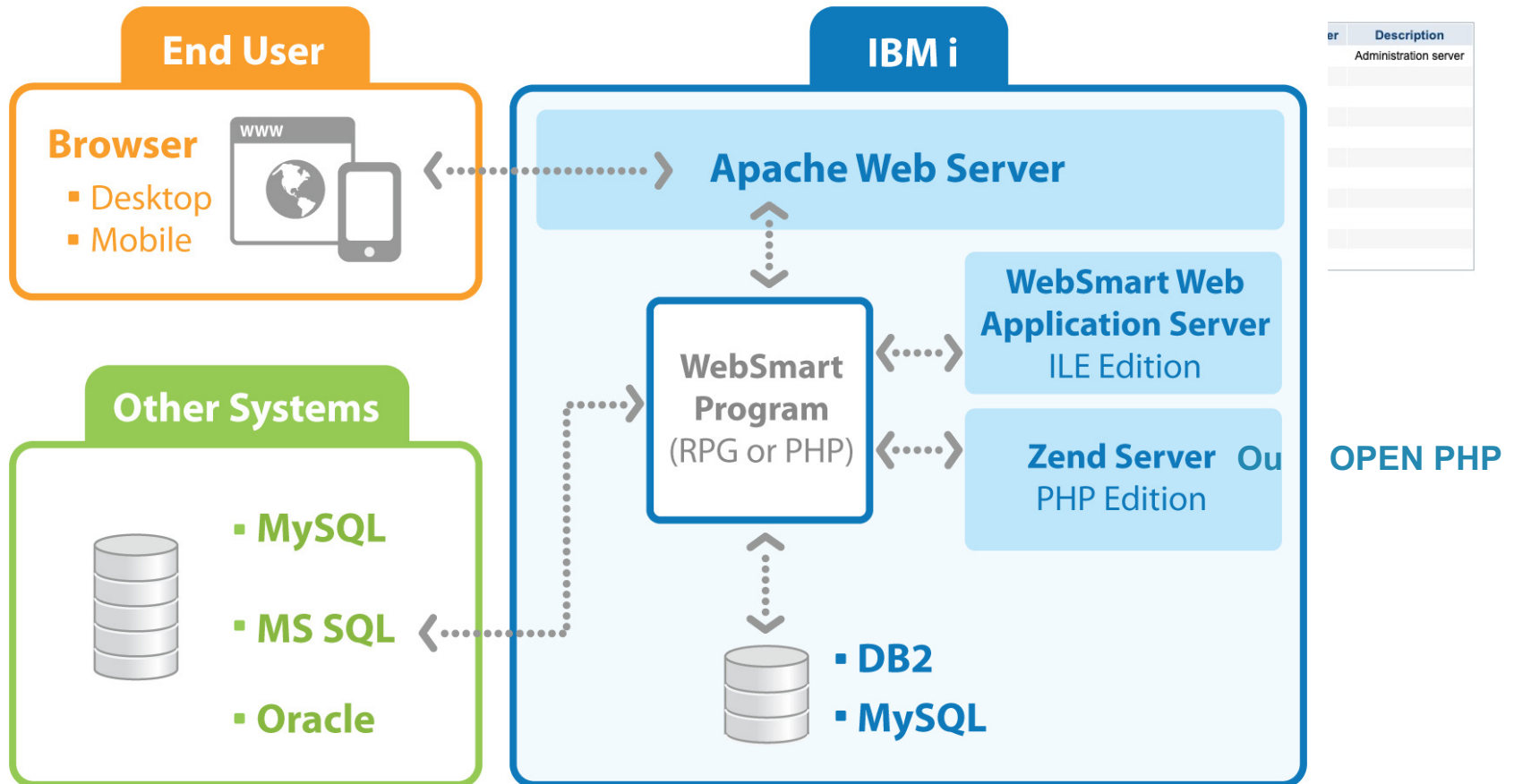
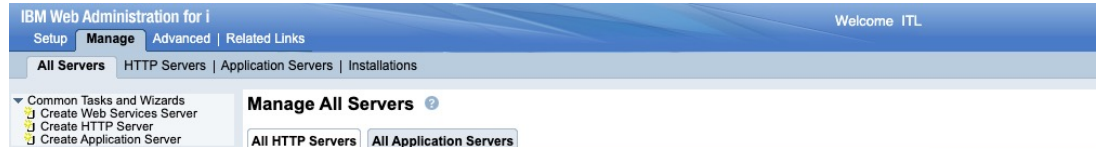
Vos applications Web sur IBMi

- Agenda
 - WebSmart
 - L'architecture
 - Couverture fonctionnelle
 - Des exemples clients
 - La méthodologie et l'IDE
 - Le modèle d'intégration évolutif
 - La démonstration
 - Le résultat pour un utilisateur
 - Sous le capot avec le développeur
 - Comment faire un programme en 3 étapes
 - Intégration au travers du modèle évolutif



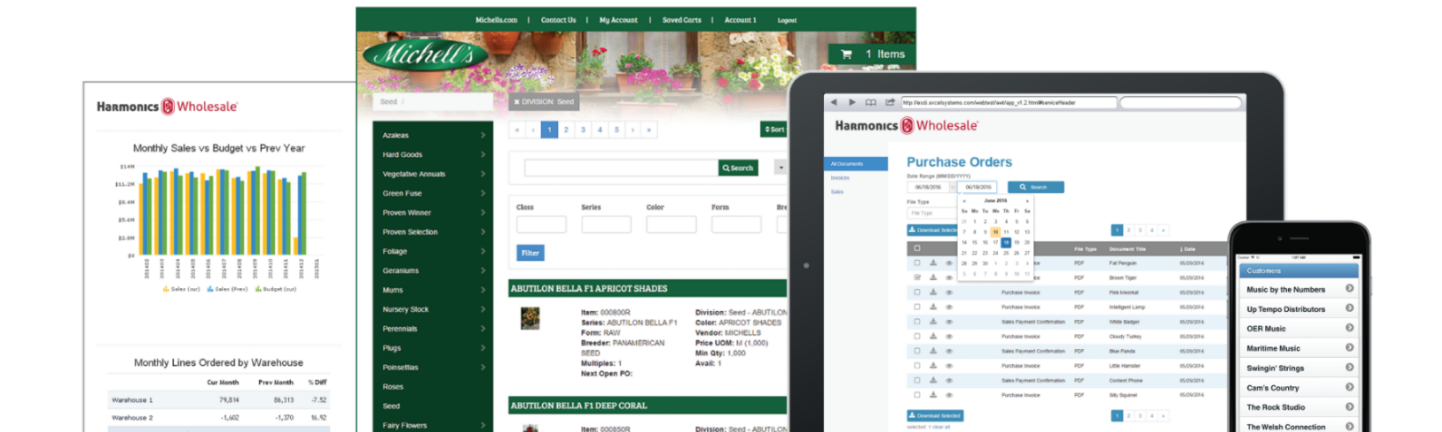
WebSmart - L'architecture

- Natif IBMi



WebSmart – La solution

- Vos applications Web en accord avec vos besoins métier



WebSmart - Couvre tous vos besoins

- Développer tous les types d'Application Web pour accompagner votre transformation digitale



Applications
Web
Stratégiques



Mobile



APIs & Web
Services



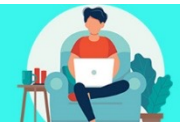
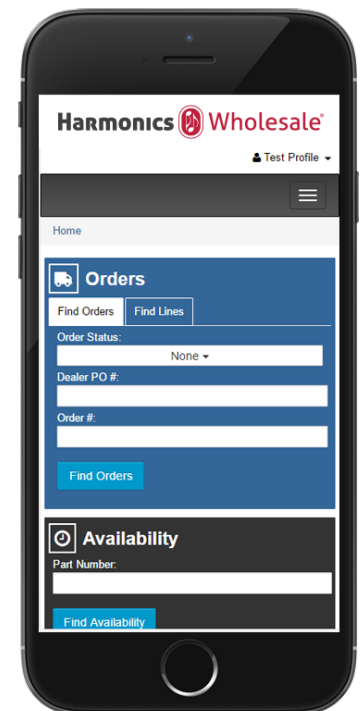
Tableau de
bord et
Portails



Améliore l'efficacité et le flux des activités

- Une meilleur interface utilisateur
- Cout de formation réduit
- Améliorer le service client

The screenshot shows the desktop version of the Harmonics Wholesale web application. The header includes the logo and a user profile dropdown. Below the header is a navigation bar with a hamburger menu and a dealer selection dropdown set to '*ALL'. The main content area is divided into several functional blocks: 'Orders' (with fields for Order Status, Dealer PO #, and Order #), 'Availability' (with a Part Number field), 'Dealer Reports Center' (a red block), 'Credits' (with fields for Credit Status, Dealer PO #, and Credit #), 'Parts Online' (a green block), 'Invoices', and 'Technical Support'. Each block contains a search or action button.



Améliorer votre compétitivité

- e-Commerce B2B ou B2C
- Intégré avec votre ERP IBMi

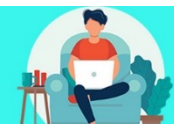
The desktop screenshot shows the T&A Industrial Distributors website. The header includes the logo, a search bar, and navigation links for Login, Register, and Cart (0). The breadcrumb trail reads: Home > All Products > Safety & Security > Clothing - Workwear > High Visibility Safety Vests. The main content area displays a grid of four safety vest products, each with a mannequin image, product name, price, and an 'Add 1 to Cart' button. The products are: 1) Protective Ind... \$4.86 (PIP® 300-EVOR-E-LY Non-ANSI Safety Vest, Silver Stripe, Hi-Viz); 2) Protective Ind... \$4.86 (PIP® 300-EVOR-E-OR Standard Safety Vest, Silver); 3) Protective Ind... \$5.34 (PIP® 300-EVOR-P-LY Standard Safety Vest, White Stripe, Hi-Vis); 4) Protective Ind... \$5.34 (PIP® 300-EVOR-P-OR Standard Safety Vest, Yellow). A left sidebar contains filters for Brand, ANSI Class, and Chest Size.

The mobile screenshot shows the same product page on a smartphone. The title is 'High Visibility Safety Vests'. The breadcrumb trail is: < Clothing - Workwear > High Visibility Safety Vests. The page features a filter section with '12 Items' and a product grid showing one vest product with its price of \$4.86.



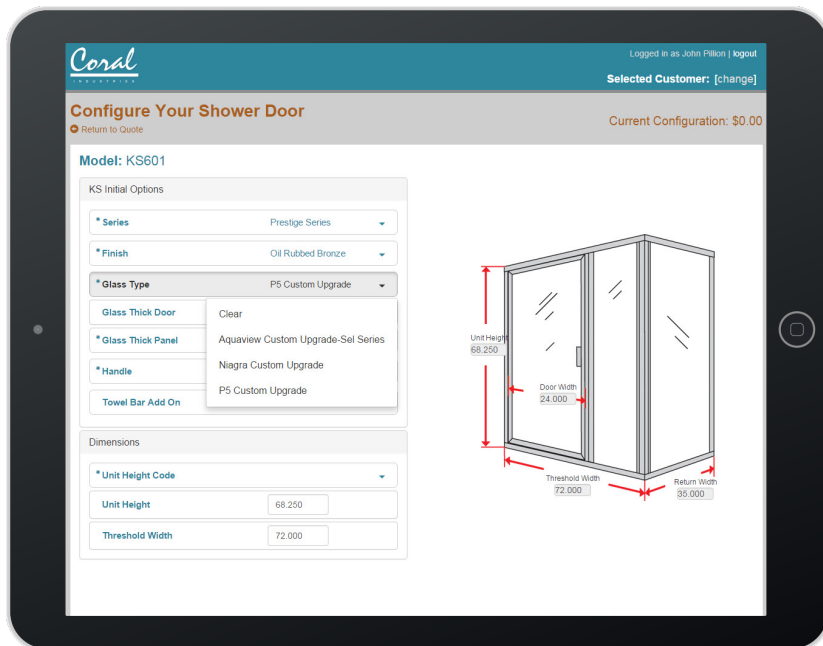
iBelieve
Présent et Futur de l'IBM i 2021

Event on-line 18 Nov.



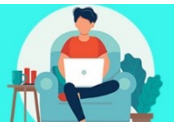
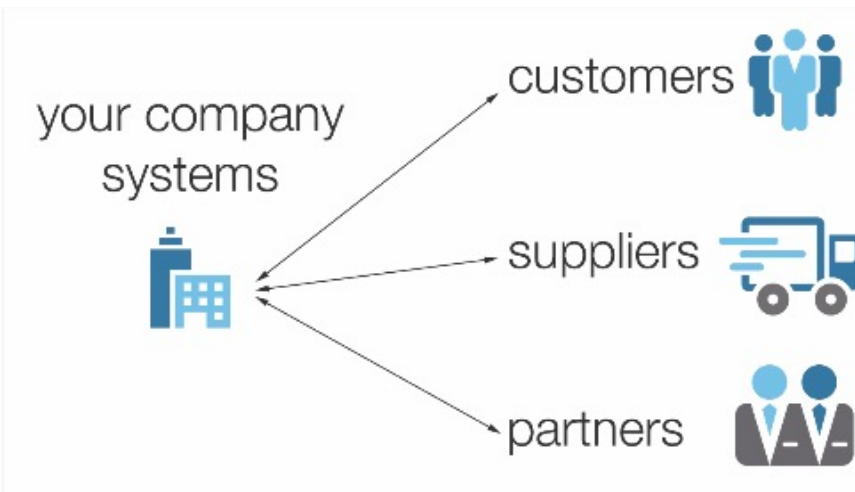
Anywhere, Anytime, Anyhow

- Améliore les processus
- Remplace le papier et le crayon
- Facilite l'accès grâce à de nouvelle méthode



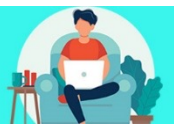
APIsez votre existant

- Intégration avec votre existant
- Gagnez en agilité
- Innovez en créant de la valeur métier



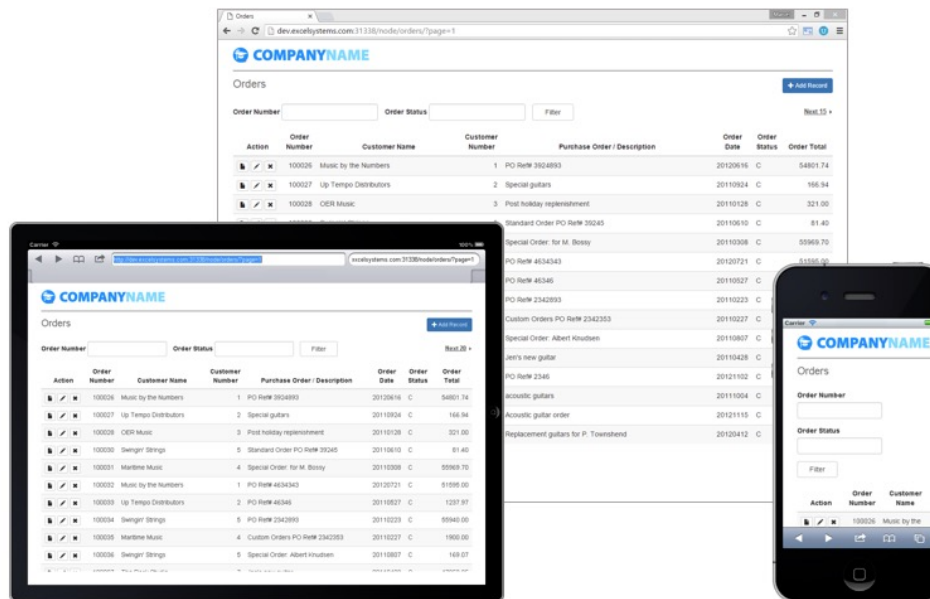
Etendre le potentiel de votre existant

- WebSmart améliore l'efficacité des développeurs et réduit le temps de développement.
- Ajouter de nouvelles fonctionnalités
- Pérennisez vos investissements

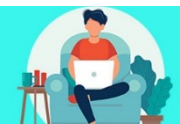


WebSmart – En 3 étapes

- Créez vos programmes en 3 étapes



Créer vos applications Web et Mobile en quelques minutes



Assistant de création de programme



Visualisation client

+ Add Record

Customer Number

Action	Customer Number	Customer Name	Address 1	Address 2	City	State/Prov	Postal/Zip Code	Country	Area Code	Phone Number	Contact Name	Email Address
	1	Music by the Numbers	3040 West Franklin Blvd.		Chicago	IL	60612	U.S.A.	312	3463466	Judy Primero	judy@notarealaddress.com
	2	Up Tempo Distributors	2200 East Camelback Road		Phoenix	AZ	85016	U.S.A.	480	4567455	Stephanie Legato	stephanie@notarealaddress.com
	3	OER Music	931 3 Avenue Northwest		Calgary	AB	T2N1V9	Canada	403	2830747	Kevin Klumbert	kevinK@notarealaddress.com
	4	Maritime Music	3200 Capitol Blvd		Olympia	WA	98504	U.S.A.	360	9020370	Kim Jeanneau	Kim.Jeanneau@notarealaddress.com
	5	Swingin' Strings	6561 Americas Parkway Northeast		Albuquerque	NM	87110	U.S.A.	505	8816800	Tom James	tomjames@notarealaddress.com
	6	Cam's Country	1267 Pearce Road		Calgary	AB	K9ER5T	Canada	555	5555555	Cameron Cash	mail@not_a_real_address.com
	7	The Rock Studio	909 12th Street		Sacramento	CA	95814	U.S.A.	916	4445900	Darrell Stone	darrell@notarealaddress.com
	8	The Welsh Connection	3728 West Leland Avenue		Chicago	IL	60625	U.S.A.	312	3457679	Richard Festinongg	r.festinongg@notarealaddress.com
	9	Fruit of the Lute	3326 Kessinger		Montgomery	AL	36116	U.S.A.	334	2721787	Dave Apple	apple.dave@notarealaddress.com

Validation Results | Messages



iBelieve
Présent et Futur de l'IBM i 2021

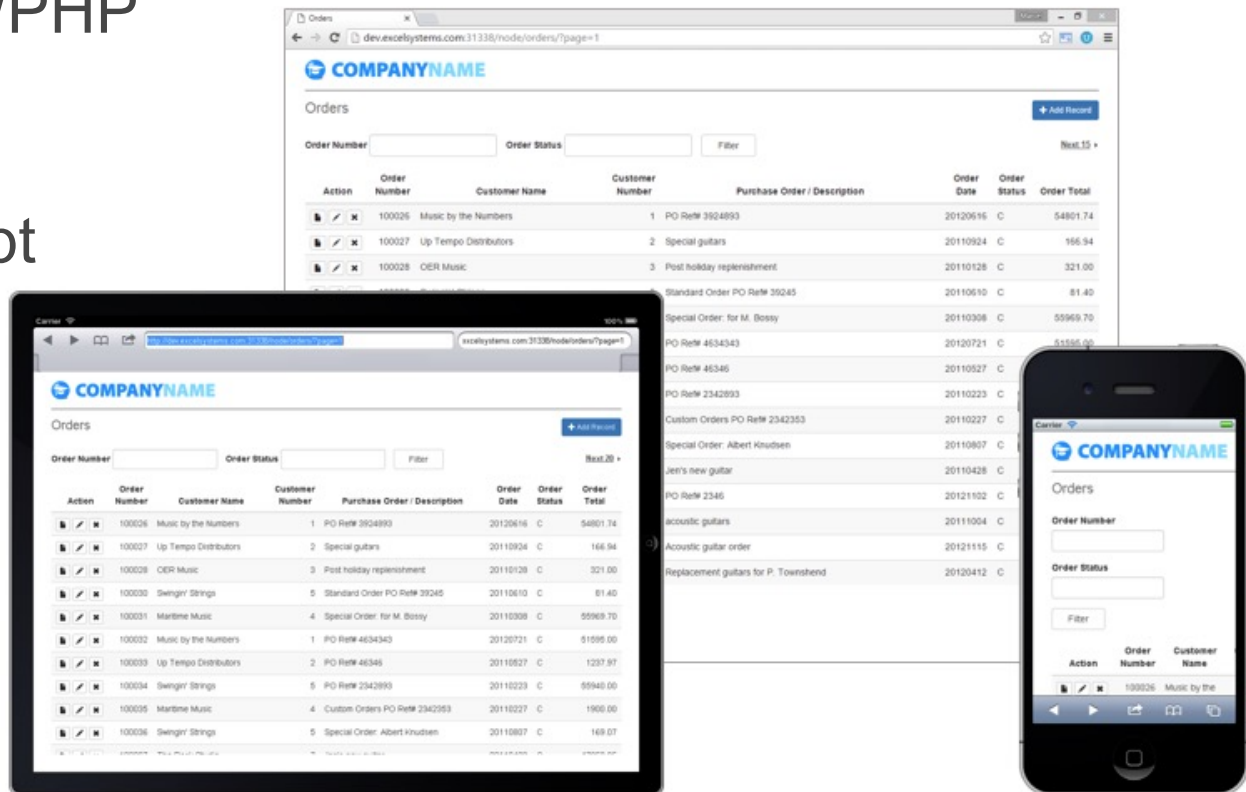
Event on-line 18 Nov.



Automatisation

Le code est automatiquement créé pour vous :

- Responsive (Pour vos tablettes & mobiles)
- RPG ILE/PHP
- HTML
- CSS
- JavaScript



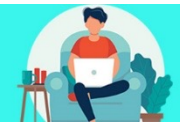
WebSmart IDE

Vos fonctions et vos paramètres

Le contrôle complet sur votre code

Contrôle de syntaxe

```
10 // Template name: Page at a Time (by Key).tpl
11 // Purpose: Maintain a database file using embedded SQL. Supports options for add, change,
12 // Program Modifications:
13
14 require_once('/esdi/websmart/v10.6/include/WebSmartObject.php');
15 require_once('/esdi/websmart/v10.6/include/x1_functions.php');
16
17 class orders extends WebSmartObject
18 {
19     protected $programState = array(
20         'sortDir' => '',
21         'sort' => '',
22         'page' => 1,
23         'filters' => array('OHSTAT' => '')
24     );
25
26     protected $listSize = 20;
27
28     public function runMain()
29     {
30         // Connect to the database
31         $this->db_connection = $this->x1_db2_connect();
32         if (!$this->db_connection)
33         {
34             die('Could not connect to database: ' . db2_conn_error());
35         }
36
37         // Fetch the program state
38         $this->getState();
39
40         // Run the specified task
41         switch ($this->pf_task)
42         {
43             // Display the main list
44             case 'default':
45                 $this->displayList();
46                 break;
47         }
48     }
49 }
```



Portail d'intégration évolutif

- Paramétrage général

Configuration

Installation folder:

Server URL:

Enable password recovery

Enable password change

Enable profile change

Address used for password recovery:

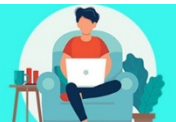
Captcha secret:

Captcha site key:

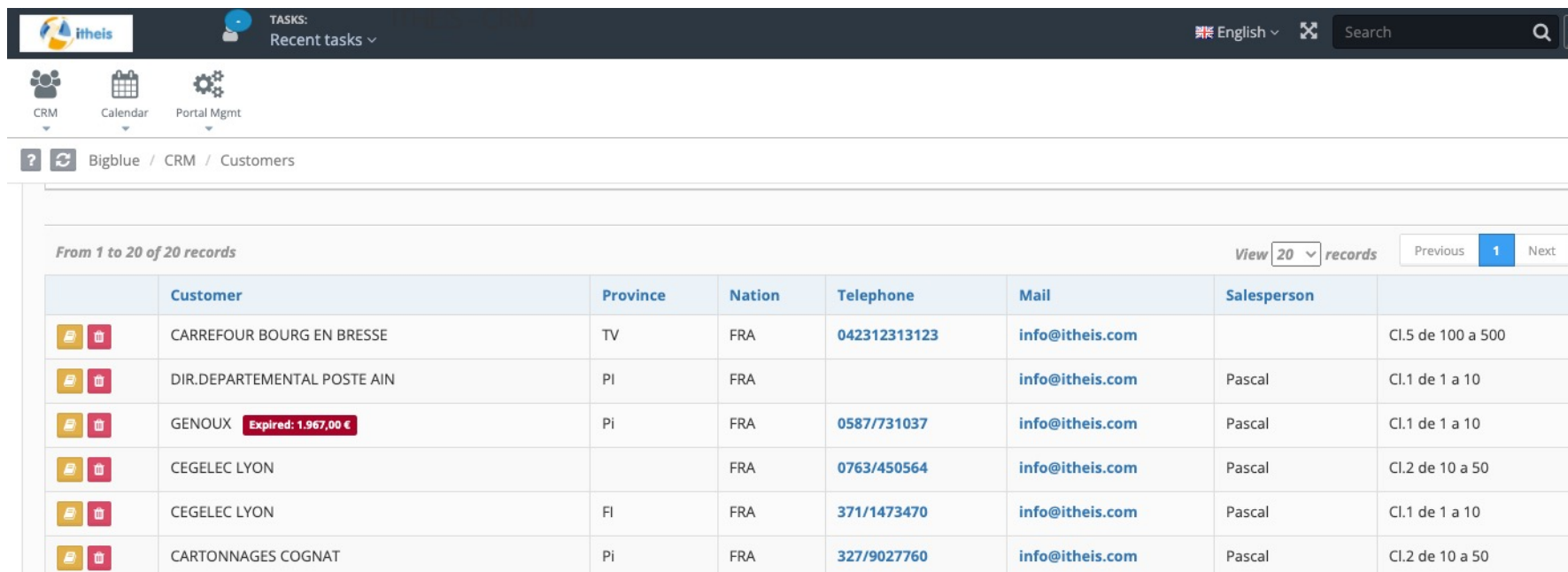
Address used for 2FA:

Enable password change for IBMi profiles













Configuration	Icon	Code	Value	Control	Field
Moyenne, max et min		XA002.pgm	20	▲▼	<input type="text"/>
DB key used as DS container		XA003.pgm	30	▲▼	<input type="text"/>
Comptage des programmes interactifs & batch		XA004.pgm	40	▲▼	<input type="text"/>
objets obsolètes		XA005.pgm	50	▲▼	<input type="text"/>
RPG36 and RPG38		XA006.nam	60	▲▼	<input type="text"/>



Démonstration coté client



The screenshot displays the itheis CRM interface. At the top, there is a navigation bar with the itheis logo, a 'TASKS: Recent tasks' dropdown, a language selector set to 'English', and a search bar. Below the navigation bar are icons for CRM, Calendar, and Portal Mgmt. The main content area shows a breadcrumb trail: 'Bigblue / CRM / Customers'. A table lists customer records with columns for Customer, Province, Nation, Telephone, Mail, Salesperson, and an additional ID column. The table includes 6 records, with the third one marked as 'Expired: 1.967,00 €'. Navigation controls for the table include 'View 20 records', 'Previous', '1', and 'Next'.

	Customer	Province	Nation	Telephone	Mail	Salesperson	
 	CARREFOUR BOURG EN BRESSE	TV	FRA	042312313123	info@itheis.com		Cl.5 de 100 a 500
 	DIR.DEPARTEMENTAL POSTE AIN	PI	FRA		info@itheis.com	Pascal	Cl.1 de 1 a 10
 	GENOUX Expired: 1.967,00 €	Pi	FRA	0587/731037	info@itheis.com	Pascal	Cl.1 de 1 a 10
 	CEGELEC LYON		FRA	0763/450564	info@itheis.com	Pascal	Cl.2 de 10 a 50
 	CEGELEC LYON	FI	FRA	371/1473470	info@itheis.com	Pascal	Cl.1 de 1 a 10
 	CARTONNAGES COGNAT	Pi	FRA	327/9027760	info@itheis.com	Pascal	Cl.2 de 10 a 50



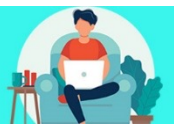
iBelieve
Présent et Futur de l'IBM i 2021

Event on-line 18 Nov.
Retour d'expérience Grands Chais de France



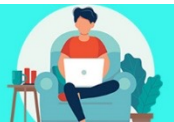
Démonstration réalisation

- Réalisation d'un programme
- Intégration dans votre application



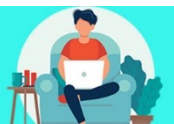
Les bénéfices

- Pas de compétence requise
- Natif dans votre infrastructure et dans vos compétences



Points forts

- Développer en 10 minutes vos applications full web et responsives sur votre IBMi.
- Utiliser vos compétences existantes.
- Utiliser vos ressources existantes IBMi only.
- Technologies reconnues mondialement
- Approche progressive
- POC chez vous



Questions/Réponses



itheis

thierry.labrunie@itheis.com

+33 (0) 6 80 62 23 17 ou +33 (0) 4 42 21 57 02

ou contactez-nous :



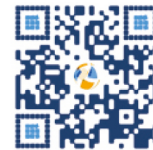
contact@itheis.com



[@itheis_IBMi](https://twitter.com/itheis_IBMi)



[www.linkedin.com/
company/itheis/](https://www.linkedin.com/company/itheis/)



Flasher
pour en savoir plus



iBelieve
Présent et Futur de l'IBM i 2021

Event on-line 18 Nov.

